



Our Guarantee
Backed by a
10 year guarantee.

Soundsure 560

Underscreed Resilient Layer / Acoustic Underlay

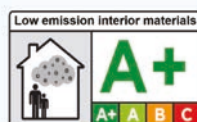
Soundsure 560 is an acoustic resilient layer that has been designed to isolate floor screeds from the main structure of the building, delivering superior impact and airborne sound performance.

Why Soundsure 560?

Soundsure 560 is a cost-effective solution for use below all types of floor screeds, where Pre-Completion Testing is preferred to that of Robust Details. As it is manufactured from recycled rubber crumb, Soundsure is not only extremely environmentally friendly, but also provides long-lasting durability and high levels of acoustic performance.

Features and Benefits of Soundsure 560

1. Suitable for use with all types of floor screeds
2. Exceeds the performance standards required in the UK Building Regulations for sound insulation
3. Quick and easy to install without any need for perimeter edge strips
4. Can be used as an alternative to Robust Details
5. Outstanding compressive strength and load bearing performance
6. Suitable for use with underfloor heating systems
7. Manufactured using recycled materials and fully recyclable
8. Green Label Plus accredited for indoor air quality and low VOC emissions



Soundsure Applications

Soundsure 560 is widely used below all types of floor screed developments, helping to deliver compliance with the performance standards required within Approved Document E (England & Wales), Technical Booklet G (Northern Ireland) and Section 5 of the Building Standards in Scotland.

It is excellent for use in:

- Apartments & Hotels
- Commercial Developments
- Care Homes
- School & Education Projects

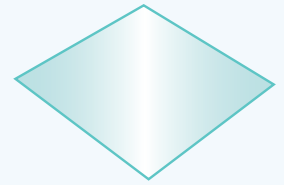
Product and Technical Information

| | |
|--|---|
| Product Construction | Rubber Crumb |
| Bonding Agent | Synthetic Latex |
| Product Thickness | 5.6mm |
| Weight | 2.24kg/m ² / 0.46 lb/ft ² |
| Density | 400kg/m ³ / 25.0 lb/ft ³ |
| Roll Size | 1.37m x 7.30m / 54" x 23.95' |
| Area | 10m ² / 107.6ft ² |
| Roll Weight | 22.4kg / 49.4 lb |
| Reaction to Fire | Class BFL-s1 |
| Test performed on SS560 below carpet | |
| Thermal Resistance (R) | 1.01 Togs |
| Temperature Resistance | -40°C to +110°C / -40°F to +230°F |
| Acoustic Performance* (no floor covering and no ceiling below) | |
| Measured improvement of impact sound (ΔLw) BS EN ISO 10140-3:2010 | 27 dB |
| Impact Insulation Class ASTM E989-21 | IIC 56 / ΔIIC 28 |
| Acoustic Performance* (with floor covering and no ceiling below) | |
| | ΔLw IIC ΔIIC |
| Sand / Cement Screed (75mm) | 24 56 26 |
| Laminate (8mm) | 19 53 23 |
| Engineered Wood (14mm) | 18 52 22 |
| Carpet Tile (Bitumen Backed) | 41 69 39 |

* Tested on a 140mm / 5½" thick concrete floor.

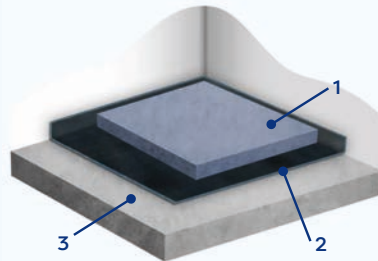
Soundsure 560 Components

- Soundsure 560 – Underscreed Resilient Layer
- Jointing tape
- Waterproof membrane (when using proprietary screeds)

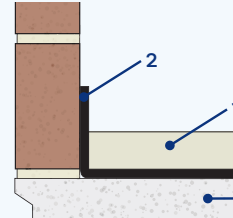


Sand/Cement Screeds - Soundsure 560 without DPM

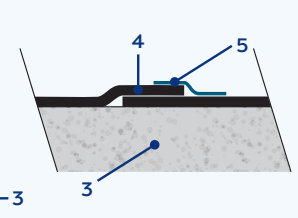
1. Min. 65mm sand cement screed
- 2. Soundsure 560**
3. Concrete floor
4. Overlap joint
5. Jointing tape



Perimeter Detail

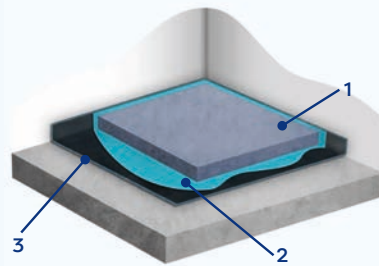


Joint Detail

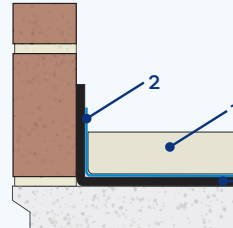


Proprietary Screeds - Soundsure 560 with DPM

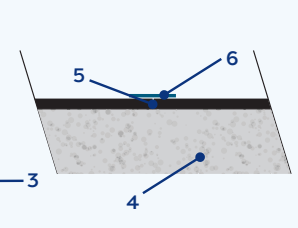
1. Proprietary Screed (Min. 40mm, 80kg/m²)*
2. Waterproof membrane
- 3. Soundsure 560**
4. Concrete floor
5. Butt joint
6. Jointing tape



Perimeter Detail



Joint Detail



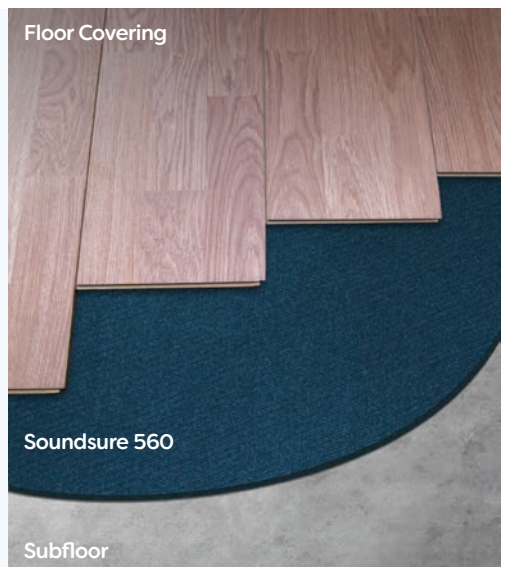
* Can be used with screeds down to 25mm, please contact the Interfloor technical team for further information

Soundsure 560 Acoustic Underlay

Soundsure 560 can also be used as a high performing acoustic underlay that significantly reduces the transmission of impact sound. It is quick and easy to work with and can be used with a wide range of floor coverings, providing long-lasting, outstanding acoustic performance and exceptional cushioning support.

As an acoustic underlay, Soundsure 560 can be used below the following types of floor coverings:

- Carpet Tiles
- Laminate (Click Joint)
- Engineered Wood (Tongue & Groove / Click Joint)
- Bamboo (Tongue & Groove)
- Parquet Floor (No Joint System)



Find out more about Sonixx

E: sonixx@interfloor.com or visit: interfloor.com/sonixx

Version Date: July 2022

