



Our Guarantee
Backed by a
10 year guarantee.

Soundsure 560

Underscreed Resilient Layer / Acoustic Underlay

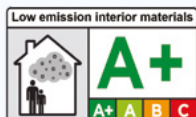
Soundsure 560 is an acoustic resilient layer that has been designed to isolate floor screeds from the main structure of the building, delivering superior impact and airborne sound performance.

Why Soundsure 560?

Soundsure 560 is a cost-effective solution for use below all types of floor screeds, where Pre-Completion Testing is preferred to that of Robust Details. As it is manufactured from recycled rubber crumb, Soundsure is not only extremely environmentally friendly, but also provides long-lasting durability and high levels of acoustic performance.

Features and Benefits of Soundsure 560

1. Suitable for use with all types of floor screeds
2. Exceeds the performance standards required in the UK Building Regulations for sound insulation
3. Quick and easy to install without any need for perimeter edge strips
4. Can be used as an alternative to Robust Details
5. Outstanding compressive strength and load bearing performance
6. Suitable for use with underfloor heating systems
7. Manufactured using recycled materials and fully recyclable
8. Green Label Plus accredited for indoor air quality and low VOC emissions



Soundsure Applications

Soundsure 560 is widely used below all types of floor screed developments, helping to deliver compliance with the performance standards required within Approved Document E (England & Wales), Technical Booklet G (Northern Ireland) and Section 5 of the Buildings Standards in Scotland.

It is excellent for use in:

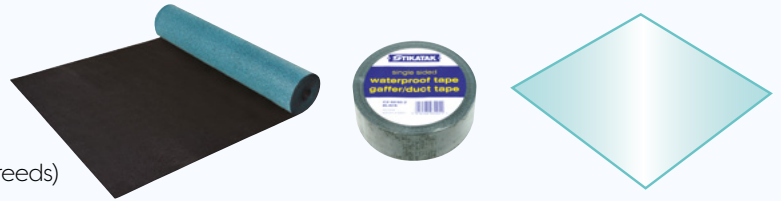
- Apartments
- Hotels
- Schools and education projects
- Commercial developments
- Care homes

Product and Technical Information:

- Product construction: rubber crumb
- Bonding agent: synthetic latex
- Product thickness: 5.6mm
- Weight: 2.24kg/m² / 0.46 lb/ft²
- Density: 400kg/m³ / 25.0 lb/ft³
- Roll size: 1.37m x 7.30m / 4' 49" x 23' 95"
- Area: 10m² / 107.6ft²
- Roll weight: 22.4kg / 49.4 lb
- Measured improvement of impact sound (ΔL_w): 27 dB BS EN ISO 10140-3:2010
- Impact Insulation Class (IIC): 56 ASTM E989-21
- Thermal Resistance (R): 1.01 Togs
- Temperature Resistance: -40°C to +110°C

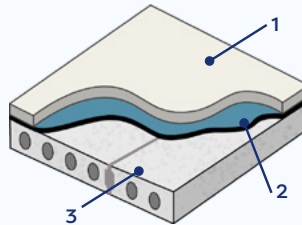
Soundsure 560 Components

- Soundsure 560 – Underscreed Resilient Layer
- Jointing tape
- Waterproof membrane (when using proprietary screeds)

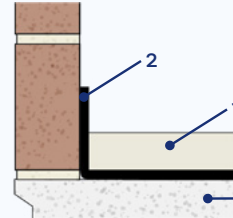


Sand/Cement Screeds - Soundsure 560 without DPM

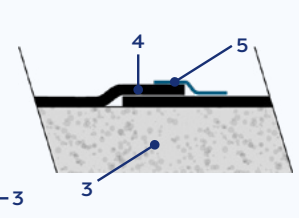
1. Min. 65mm sand cement screed
- 2. Soundsure 560 (overlapped joint)**
3. Concrete floor
4. Overlap joint
5. Jointing tape



Perimeter Detail



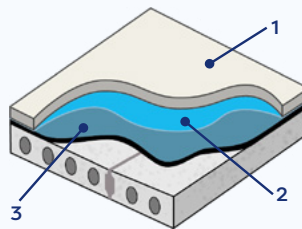
Joint Detail



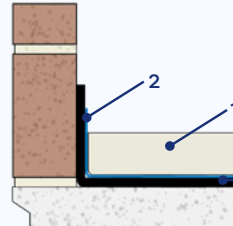
Proprietary Screeds - Soundsure 560 with DPM

1. Proprietary Screed (Min. 40mm, 80kg/m²)
2. Waterproof membrane (Min. 500 gauge polythene) – overlap to be a minimum of 100mm and sealed at edges with jointing tape

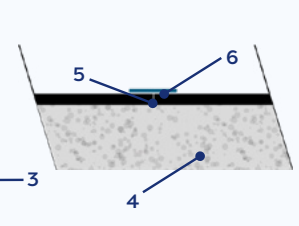
- 3. Soundsure 560 (butted joint)**
4. Concrete floor
5. Butt joint
6. Jointing tape



Perimeter Detail



Joint Detail

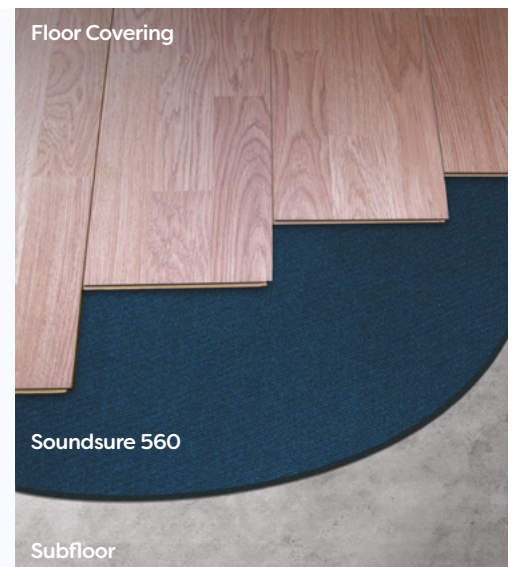


Soundsure 560 Acoustic Underlay

Soundsure 560 can also be used as a high performing acoustic underlay that significantly reduces the transmission of impact sound. It is quick and easy to work with and can be used with a wide range of floor coverings, providing long-lasting, outstanding acoustic performance and exceptional cushioning support.

As an acoustic underlay, Soundsure 560 can be used below the following types of floor coverings:

- Carpet Tiles
- Broadloom Carpet
- Natural Floor Coverings
- Engineered Wood (Tongue & Groove)
- Laminate (Click Joint)
- Solid Wood (Tongue & Groove)
- Bamboo (Tongue & Groove)
- Parquet Floor (No Joint System)



Find out more about Sonixx

E: sonixx@interfloor.com or visit: interfloor.com/sonixx

Version Date: November 2021

