

Underlay Technical Specification

Item Code: TAROYALE700

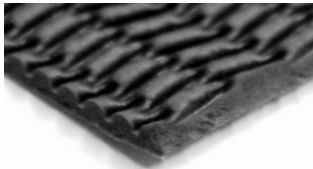
Issue Date: 12/3/2013

Issue No. 10

Sponge Rubber Textured Flat

Suitable for the stretch-fit installation of carpets

End Use Classification (BS 5808: 1991): HC/U, Heavy Contract Use



Standard Specifications

Nominal square weight †	3560 g/m ² (105 oz/yd ²)
Nominal roll weight†	35.6 kg
Roll area*	10.00 m ² (1.33m x 7.52m)

BS 5808: 1991

End Use Classification	HC/U, Heavy Contract Use	
Nominal thickness†	7.00 mm	BS 4051
Mean original thickness from nominal thickness (Max.12%)	5.00 %	BS 4051
Difference between max. & min. original thicknesses (Max.3mm)	0.30 mm	BS 4051
Work of compression Minimum 50 J/m ²	129 J/m ²	BS 4098 & BS 4052
Retention of work of compression (min 40%)	88 %	BS 4098 & BS 4052
Compression after dynamic loading	2.90 mm	BS 4098 & BS 4052
Loss in thickness after dynamic loading (max 15%)	2.7 %	BS 4052
Loss in thickness after static loading (max 15%)	3.2 %	BS 4939
Resistance to cracking (not greater than 50mm)	Pass	BS 5808

Flammability

Hot metal nut test (tested in Interfloor laboratory)	Low radius of effects of ignition	BS 4790 & BS 5287
--	-----------------------------------	-------------------

Other Specifications

Odour	No objectionable odour	
Antimicrobial and mildew resistant	Yes	
Colour / backing	Black / unprinted Textron® backing	
Packaging	Blue tinted film with printed insert	
Thermal resistance	0.8 togs	BS 4745
Impact sound reduction (Delta Lw)	31 dB ‡	BSEN ISO 140-8: 1998 and BSEN ISO 717-2: 1997
Emissions (US Carpet & Rug Institute)	Meets low VOC emission criteria	

Certification



Guarantee

Guaranteed for the serviceable lifetime of the carpet when used in accordance with the End Use Classification.

Notes

* The nominal roll dimensions have been quoted. These may vary slightly, but will still equate to the area quoted. This does not constitute a manufacturing specification. It details important performance and physical characteristics only.

† ±10%

‡ Value derived from similar product test results