



Our Guarantee
Backed by a
10 year guarantee.

Soundsure 300

Underscreed Resilient Layer / Acoustic Underlay

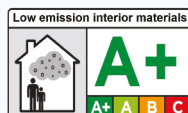
Soundsure 300 is an acoustic resilient layer that has been designed to isolate floor screeds from the main structure of the building, delivering superior impact and airborne sound performance.

Why Soundsure 300?

Soundsure 300 is an environmentally friendly, cost-effective solution for use below all types of floor screed. It can also be used as an underlay below laminates, wood flooring, carpet tiles and ceramic, porcelain or natural stone tiles, providing high levels of acoustic performance.

Features and Benefits of Soundsure 300

1. Suitable for use with all types of floor screeds
2. Exceeds the performance standards required in the UK Building Regulations for sound insulation
3. Quick and easy to install without any need for perimeter edge strips
4. Can be used as an alternative to Robust Details
5. Outstanding compressive strength and load bearing performance
6. Suitable for use with underfloor heating systems
7. Manufactured using recycled materials and fully recyclable
8. Green Label Plus accredited for indoor air quality and low VOC emissions



Product Code: TASS300

Soundsure Applications

Soundsure 300 is widely used below all types of floor screed developments, helping to deliver compliance with the performance standards required within Approved Document E (England & Wales), Technical Booklet G (Northern Ireland) and Section 5 of the Building Standards in Scotland.

It is excellent for use in:

- Apartments & Hotels
- Commercial Developments
- Care Homes
- School & Education Projects

Product and Technical Information

Product Construction	Rubber Crumb
Bonding Agent	Synthetic Latex
Product Thickness	3.00mm
Weight	1.57g/m ² / 0.32 lb/ft ²
Density	400kg/m ³ / 25.0 lb/ft ³
Roll Size	1.00m x 10.00m / 39.37" x 32.81'
Area	10m ² / 107.6ft ²
Roll Weight	12.9kg / 28.4 lb
Flammability: Hot Metal Nut Test	Low Radius of Emission
Reaction to Fire	Bfl-S1
Temperature Resistance	-40°C to +110°C / -40°F to +230°F
Acoustic Performance* (no floor covering and no ceiling below)	
Measured improvement of impact sound (ΔLw) BS EN ISO 10140-3:2010	21 dB
Impact Insulation Class ASTM E989-21	IIC 54 / ΔIIC 25
Acoustic Performance* (with no floor covering and no ceiling below)	
	ΔLw IIC ΔIIC
Prefab Concrete screed (48mm)	19 52 23
Acoustic Performance* (with floor covering and no ceiling below)	
	ΔLw IIC ΔIIC
No Floor Covering	21 54 25
Concrete (48mm)	19 52 23

* Tested on a 140mm / 5½" thick concrete floor.

Soundsure 300 Components

- Soundsure 300 – Underscreed Resilient Layer
- Jointing tape
- Waterproof membrane (when using proprietary screeds)



Sand/Cement Screeds – Soundsure 300 without DPM

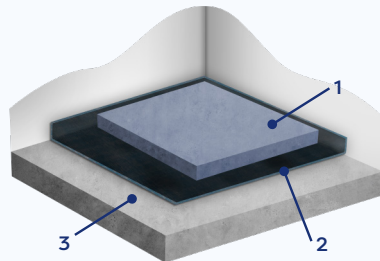
1. Min. 65mm sand cement screed

2. Soundsure 300

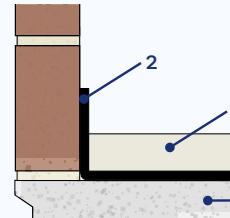
3. Concrete floor

4. Overlap joint

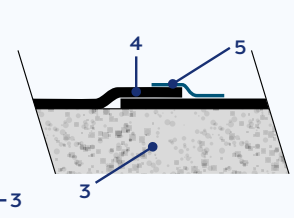
5. Jointing tape



Perimeter Detail



Joint Detail



Proprietary Screeds – Soundsure 300 with DPM

1. Proprietary Screed (Min. 40mm, 80kg/m²)*

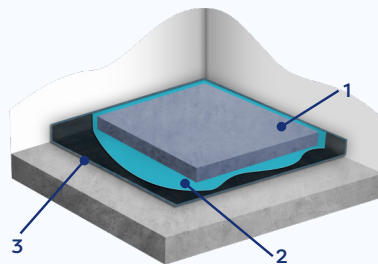
2. Waterproof membrane

3. Soundsure 300

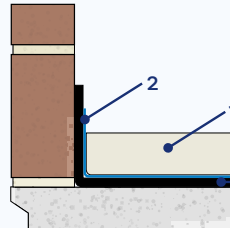
4. Concrete floor

5. Butt joint

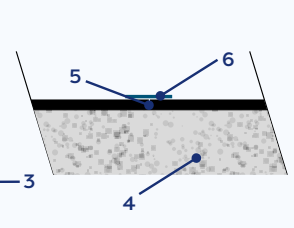
6. Jointing tape



Perimeter Detail



Joint Detail



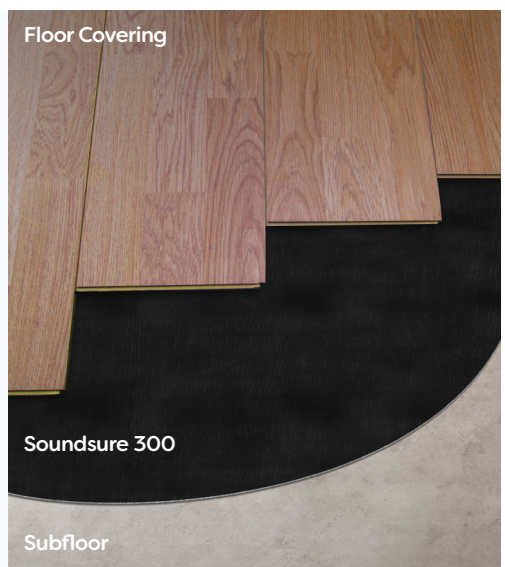
* Can be used with screeds down to 25mm, please contact the Interfloor technical team for further information

Soundsure 300 Acoustic Underlay

Soundsure 300 can also be used as a high performing acoustic underlay that significantly reduces the transmission of impact sound. It is quick and easy to work with and can be used with a wide range of floor coverings, providing long-lasting, outstanding acoustic performance and exceptional cushioning support.

As an acoustic underlay, Soundsure 300 can be used below the following types of floor coverings:

- Carpet Tiles
- Laminate (Click Joint)
- Engineered Wood (Tongue & Groove / Click Joint)
- Bamboo (Tongue & Groove)
- Parquet Floor (No Joint System)
- Ceramic / Porcelain / Natural Stone Tiles



Find out more about Sonixx

E: sonixx@interfloor.com or visit: interfloor.com/sonixx

Version Date: August 2025



Sonixx is part of Interfloor. Interfloor is accredited to ISO 9001, 14001 and 45001.